

*system***skan**[®]

secure your data !



*“ Protect
your most
valuable asset...
...information ”*

Are your company secrets and confidential information safe ?
Even from people within your own organisation ?
How do you really know ?

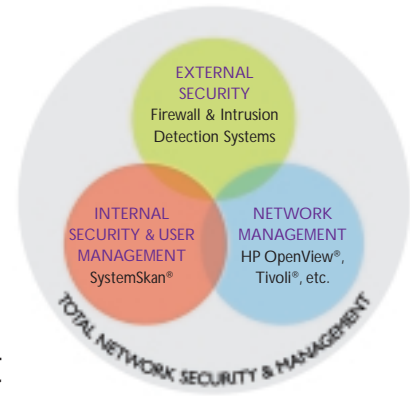
Dtex Systems provides organisations around the world with the ability to track and proactively control their most valuable asset - INFORMATION

Feel safe knowing that the right people are using your data for the right reason.

- Guard your data against sabotage and corporate theft
- In times of importance, track and control the activity of your corporate data
- Is your data leaving the firm ? track who, what, where, when and prevent it from happening again

Secure your Data !

Managing Users, Information & Networks



“SystemSkán® is an essential policy enforcement tool to manage networks, knowledge workers and to protect intellectual property.”

Today with users being able to access the Internet, send and receive e-mail and browse the local network, often in an unstructured manner, it is more important than ever that users or employees are focused and productive. It is essential that access to information is managed and users are accountable for their actions. Many IT Administrators and business managers lack the tools to know quickly and accurately what users are doing on an organisations computers and the network. With the recent rapid rollout of networking and computing technology in most organisations, little consideration has been given to providing solid management systems to ensure that the investment in technology delivers maximum benefit.

Many organisations focus solely on securing their networks from external threats with various types of firewall technology. Most organisations however, neglect to implement strategies to manage the internal risks in their network. It is now common knowledge that more than 70 percent of information security breaches originate internally. There is only one product that provides a fully integrated internal security and policy enforcement solution that can be deployed over small and large scale networks – SystemSkán.

SystemSkán is used world wide to identify the internal security risks within an organisation, and provide a policy enforcement tool to minimise these risks.

Important questions to ask when assessing your computer network strategy are:

- Do you have an information security policy in place?
- How do you know that this policy is being followed by your staff?
- Are you really in control of your network?
Do you know what users are doing and what type of information is stored and accessed on your network?
- Are your documents, financial information, processes and intellectual information properly secured?
- Are you aware who is accessing what information on your network?
- Is Internet access and e-mail a blessing or a curse and are you getting the productivity you expect from your employees?
- Are your users accountable and do your users know that they are accountable?
- Are your network hardware resources used for the correct purposes?
- Are you sure that all the software installed on your network is legitimate and not pirated software?
- Are you able to manage your network quickly and efficiently?

SystemSkán assists you to set the appropriate policy and provides enforcement which will protect your company information, addressing all the questions raised above.

SystemSkán is a total user management tool, which provides business managers and IT Administrators with the ability to view and record every user's actions on the computer network, including Internet and outgoing email attachments. With SystemSkán every user event is audited and can be controlled. SystemSkán can detect program usage, file access and activity, and generate records of all network activity, including (but not limited to) internet use and provide reports in a simple, easy to use format.

Unlike basic monitoring products which are purely reactive (i.e. providing a report once a breach of network policy has occurred), SystemSkán provides both **Reactive** and **Proactive** security features. Reactive security is provided through the Report Wizard which logs all user activity. Proactive security is provided by the Permissions Manager which continuously and automatically screens all activity and can be configured to prevent inappropriate activities or lock users PC's when network policy is broken. This proactive functionality prevents policy breach before it occurs.

SystemSkán has been developed to suit the needs of IT Administrators, but with a simple to use central console, it is friendly enough for CEO's, department and IT managers to use quickly and easily. SystemSkán is an essential policy enforcement tool to manage networks, knowledge workers and to protect intellectual property.

SystemSkán® does not replace the requirement for adequate firewall and external security technologies, rather it is complementary technology to provide a complete, internal security and policy enforcement solution.



Features of SystemSkon

SystemSkon is modular in design, enabling various modules or tools to be integrated into one simple package. In this way the SystemSkon solution can be tailored to match the specific needs of any organisation.

Such modules include;

- Policy Enforcement.
- Remote Administration.
- Asset Management.
- Image Restoration.

Additional modules are continually developed to provide for the changing needs of management and network administrators.

Policy Enforcement

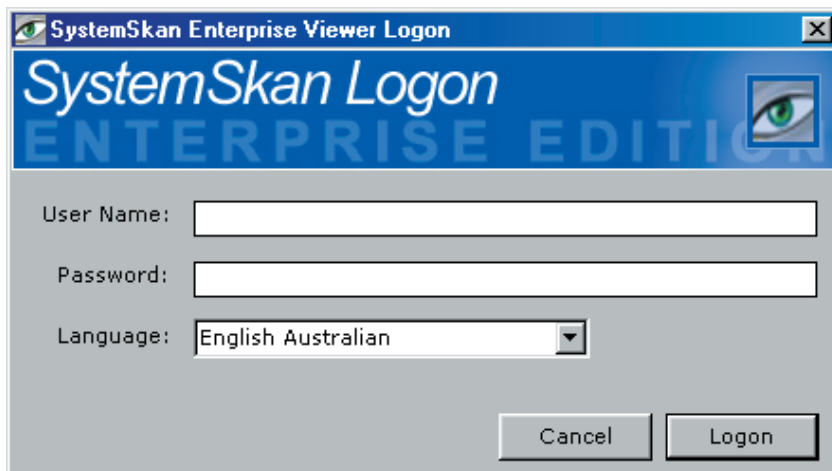
Reporting and Filtering

SystemSkon provides a complete audit trail of business and personal use of computers within the workplace. Business Managers and IT Administrators can view these records at their convenience. Application use, file and directory access, Internet activity and email attachments are all recorded. Reports can be generated, and audited logs can be filtered to quickly and easily identify specific activity. All reports can be printed and exported.

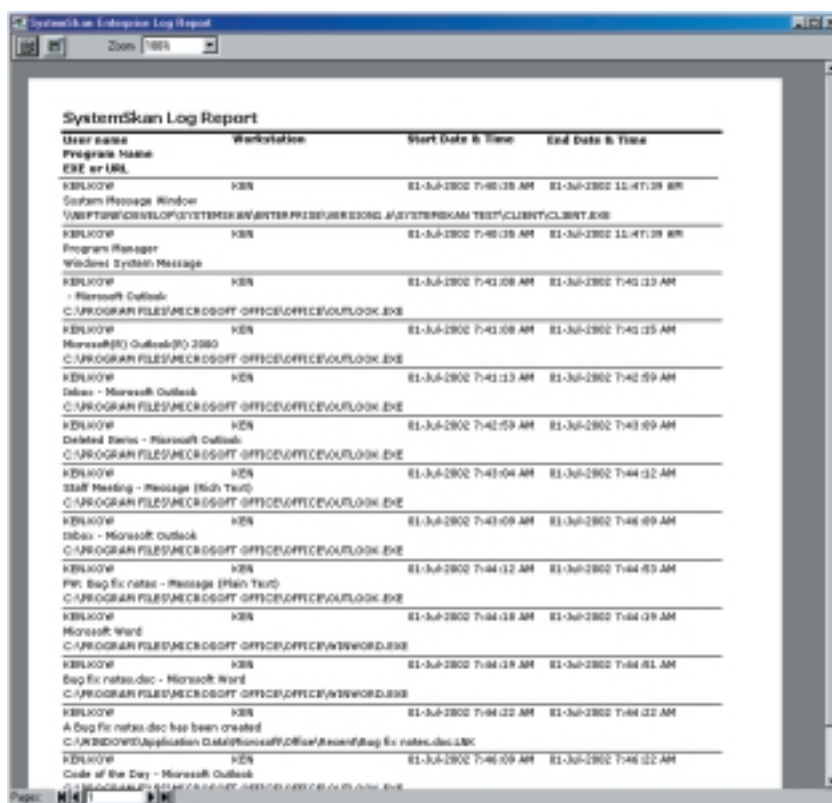
Restrictions and Alerts

The Permissions Manager allows IT Administrators to predefine a list of suitable applications, network information and websites that can be accessed by particular groups of users. For example, a certain user group may only be permitted to run common applications such as Microsoft Office and Outlook, and access a limited number of work related websites. Another user group may be able to access more applications, a larger list of web sites and a different set of network directories.

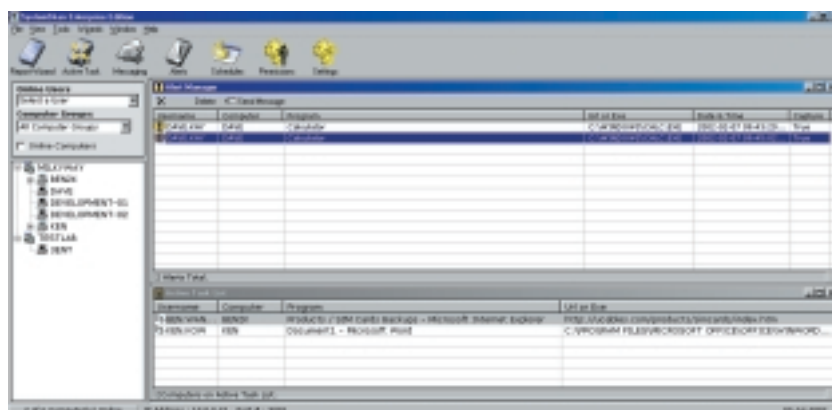
Simple restrictions on the use of removable media such as floppy or zip disks can help to greatly reduce the introduction of viruses and the removal of company data. Similarly, restricting access to web based mailing (eg. Hotmail and Yahoo) ensures that users are utilising the company e-mail system in a manner that promotes professionalism and ensures that confidential information is not removed from site without authorisation.



Logon screen

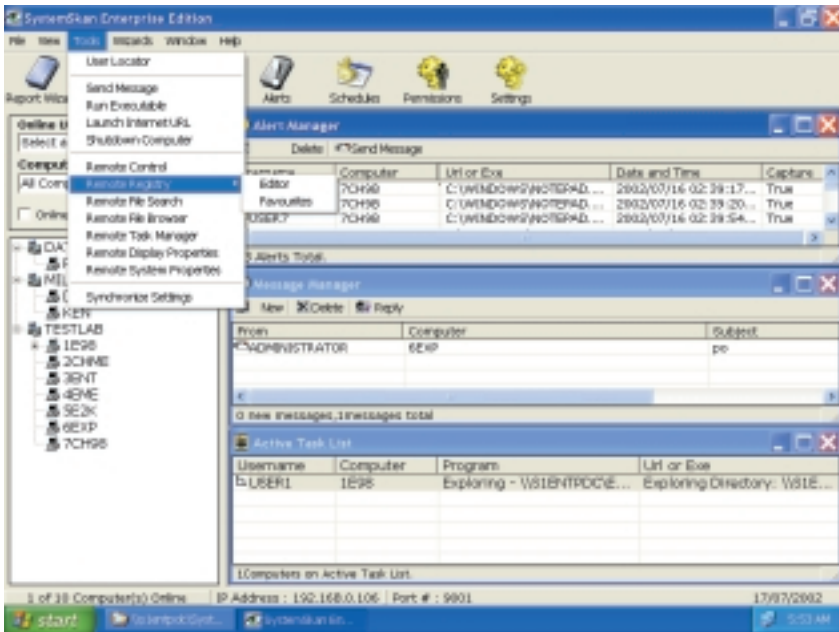


Log report

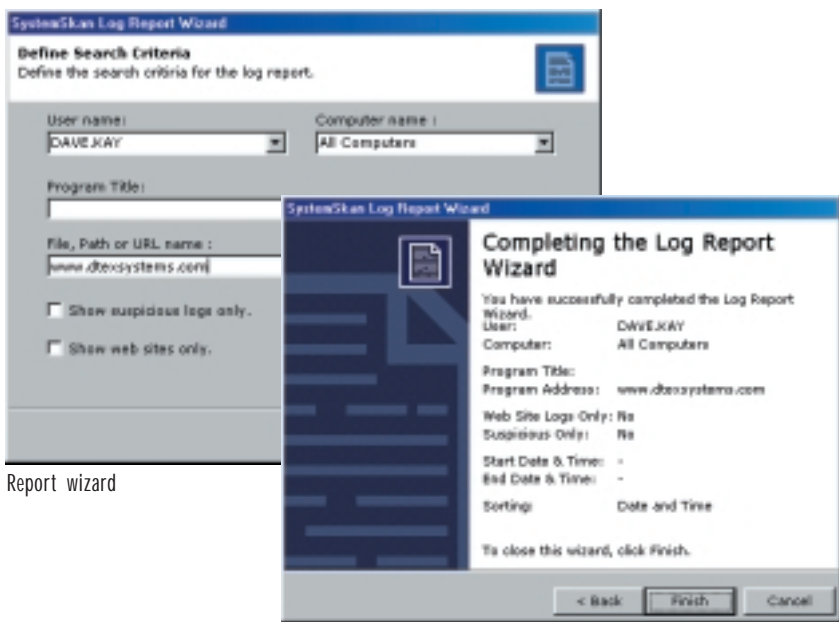


Alert manager

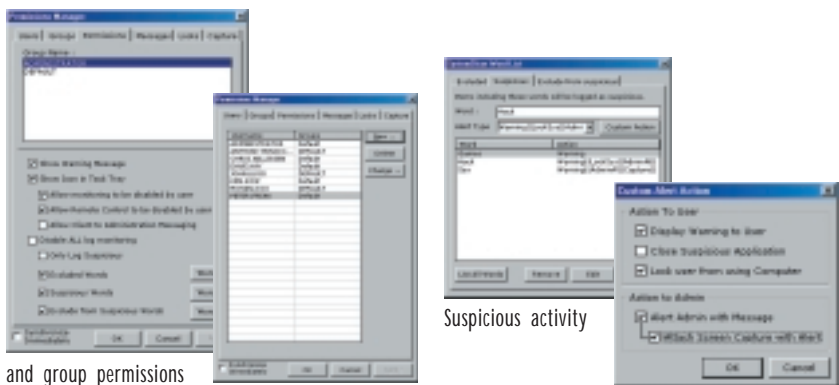
Maintain total control of your most valuable asset, information.



Remote control



Report wizard



User and group permissions

User and group manager

Suspicious activity

Alert action

The Alert Managers directs the administrator to suspicious activities. Once a suspicious activity has been identified, SystemScan can enable the following automated actions to occur:

- No action.
- Warn the user of the activity.
- Alert the Administrator.
- Close the application automatically.
- Take a snapshot of the workstation's screen.
- Lock the workstation.
- Combinations of any of the above.

Remote Administration

Unlike simple graphical remote control products, SystemScan Remote Administration provides total control over any number of remote computers without chewing up bandwidth or slowing down the network. This enables IT Administrators to maximise their productivity without disturbing users.

This module also provides a help desk facility with integrated messaging and remote launching of executables, web sites and applications.

Asset Management

The SystemScan Asset Management module provides complete software and hardware audits for the entire network in one click of the mouse. This functionality eliminates the need for the extremely time consuming manual process which until now has been a regular requirement for every organisation.

This module provides the unique ability to identify any changes to software or hardware configurations over a specific time period.

Image Restoration

Functionality in this module enables administrators to pull complete hard drive images from the server to the workstation, even prior to installation of an operating system. It can also identify changes to an image and restore the original image upon reboot or on command.

Maximise the productivity of your most valuable resource, your staff.

Benefits of SystemSkán



Protect your data and intellectual property by:

- Tracking the opening, copying and deletion of files.
- Finding users responsible for damage to files and operating systems.
- Tracking access to confidential files.
- Restricting the use of removable media.
- Restricting the use of web based mailing systems.
- Securing access to sensitive network folders and files.

Save money on your network hardware resources and Internet accounts by:

- Tracking users who make excessive and unnecessary downloads.
- Finding users who visit pornographic or other inappropriate sites.
- Put a stop to users wasting time on games and unrelated material.

Save valuable time by:

- Providing your administrators with a centralised point of control for the entire network.
- Executing complete hardware and software audits with the click of a button.
- Preventing the unnecessary tampering of computer registries and configurations.
- Tracing the origin of viruses on the network.

Support users and network management tasks with:

- Remote administration and diagnostic tools for quick and efficient help desk support.
- Remotely control a computer to show a user how to perform a task.

Ensure corporate compliance by:

- Preventing the installation of illegal software on the network.
- Tracking of all installed software.

SystemSkán in a Corporate or Government Environment

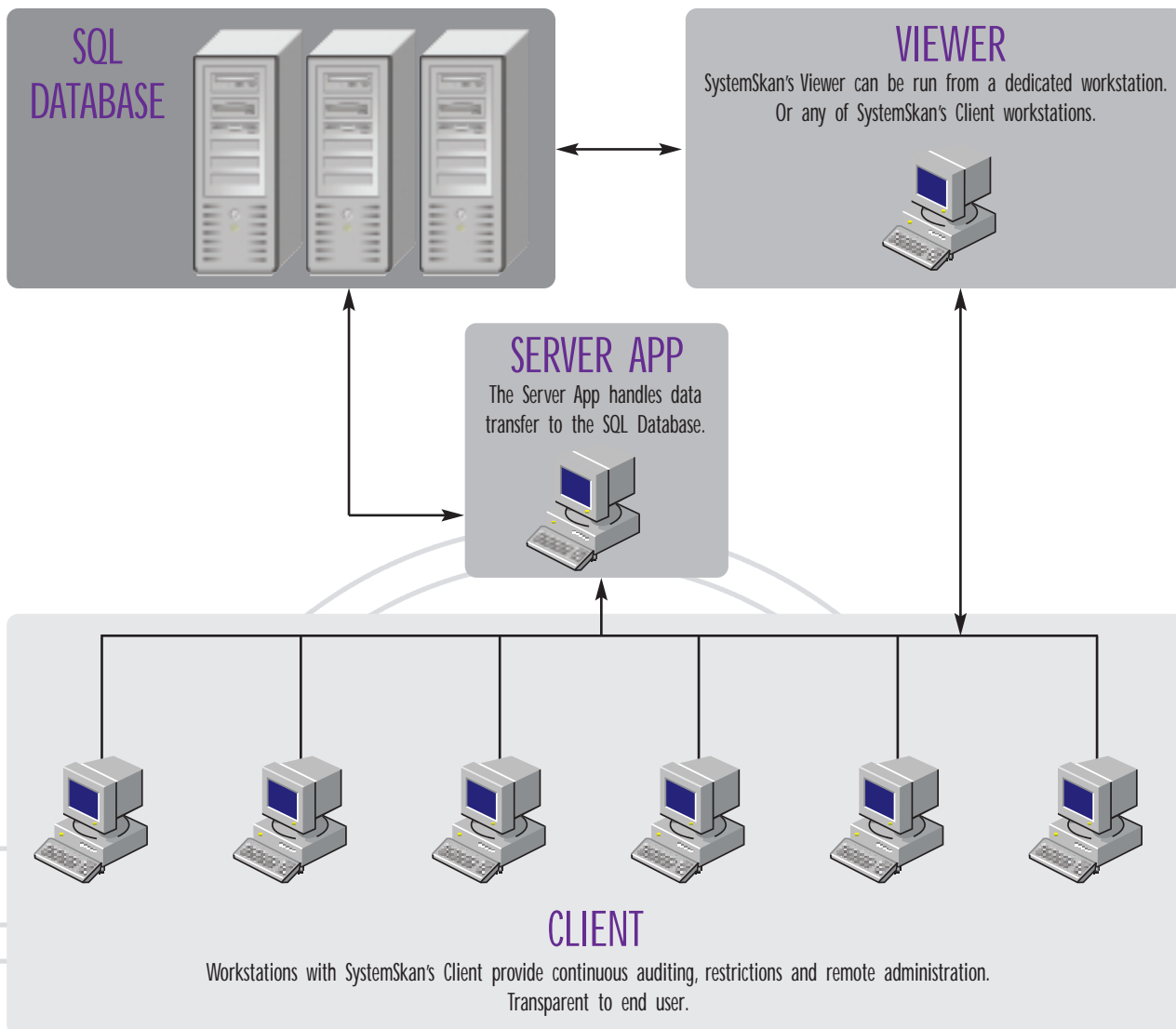
- Secure access to files and intellectual property.
- Ensure employees are productive and focused.
- Track and control access to all information.
- Ensure that network resources are utilised appropriately.
- Provide access to the Internet for employees with the confidence that access will be managed and that they will not be wasting valuable company time or using unauthorized web based mailing systems.
- Provide managers with tools to know who is doing what on the network and when.
- Ensure employees know that they are accountable for their actions.

SystemSkán in an Educational Environment

- Ensure students are productive and focused.
- Ensure network resources are utilized appropriately.
- Provide students with supervised access to the Internet, preventing access to harmful and inappropriate information.
- Secure access to files and prevent the incidence of malicious activities.
- Ensure that pirated software and games are not installed on the network.
- Provide teachers with tools to know who is doing what on the network and when.
- Ensure students know that they are accountable for their actions.
- Multitasking facilities, allowing students to view a demonstrating computer from their own computers.

Technical Specifications

SystemSkan Enterprise Edition



System Requirements

CLIENT

Compatible Operating Systems

- Windows® 95
- Windows® 98
- Windows® ME
- Windows NT® 4 Workstation
- Windows® 2000 Professional
- Windows® 2000 Server
- Windows® XP Professional

MINIMUM HARDWARE (CLIENT)

- Pentium® 100 (or equivalent)
- 32 MB RAM
- 5 MB Free Hard Drive Space
- VGA Compatible video card
- Network Card (Configured with TCP/IP protocol)

INCREASING CLIENT LICENCES

This is done by adding a registration key into the viewer, allowing for more client connections.

VIEWER

Compatible Operating Systems

- Windows® 95
- Windows® 98
- Windows® ME
- Windows NT® 4 Workstation
- Windows NT® 4 Server
- Windows® 2000 Professional
- Windows® 2000 Server
- Windows® XP Professional

MINIMUM HARDWARE (VIEWER)

- Pentium® 100 (or equivalent)
- 64 MB RAM
- VGA Compatible video card
- Network Card (Configured with TCP/IP protocol)

UPGRADING SYSTEMSKAN

This can be done on the server, making it a quick and simple task.

DEPLOYMENT METHODS

Installation on workstations can be carried out via the following methods:

- Remotely using network policies and scripting
- From CD rom or shared files from server

MULTIPLE SITES

Using the WAN Relay Application allows multiple sites to connect over a WAN or VPN.

NETWORK

Compatible Operating Systems

- Windows NT® 4 Server
- Windows® 2000 Server
- Novell® Netware



For more information on SystemSkan software, visit: www.dtexsystems.com

© 2001 Dtex Systems Pty Ltd.

Dtex Systems® and SystemSkan® are trademarks of Dtex Systems Pty Ltd.

Microsoft® and Windows® are registered trademarks of the Microsoft Corp.

Tivoli® is a registered trademark of the IBM Corp.

OpenView® is a registered trademark of the Hewlett Packard Corp.

All other trademarks are the property of their respective owners.

Product specifications subject to change without notification.

[Http:// www.magfield.com](http://www.magfield.com)

Our Partner

MAGFIELD TECHNOLOGY SDN BHD
568-9-2(9TH FLOOR)
KOMPLEKS MUTIARA OFFICE SUITE
3 1/2 MILES JALAN IPOH
51200 KUALA LUMPUR, MALAYSIA
TEL : 603-62502168 FAX : 603-62502169